

LONG RAIL TRAILER (LRT)



Permaquip Ltd

Old Sleningford Farm,
North Stainley,
Ripon,
North Yorkshire, HG4 3JB

Tel: +44 (0) 1623 513349

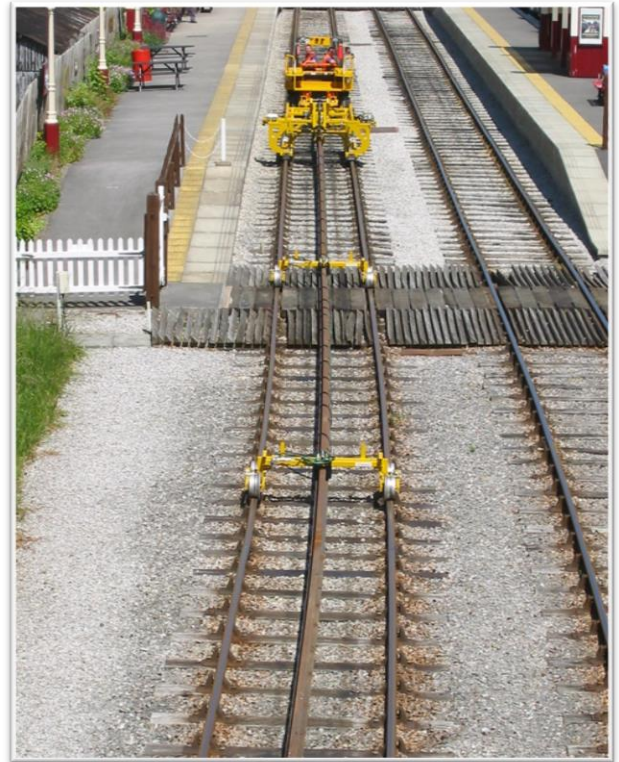
E-mail: sales@permaquip.co.uk
www.permaquip.co.uk



MADE IN BRITAIN

The Permaquip Long Rail Trailer (LRT) system is a long rail handling and carrying device for use on-track. It has been specially developed to be used in conjunction with a compatible RRV, such as, the Permaquip Kubota RTV X1110 RRV.

- Move long lengths of rail
- Use with existing Permaquip RRVs
- No OHL issues
- Simple and safe
- Minimal manual handling
- Can thread rail in and out of the four-foot
- No damage to rail or infrastructure
- Can travel over S&C
- 108m (350') lengths of rail can be moved with the Permaquip Kubota RRV
- 216m (709') lengths of rail can be moved with an R2R 4x4 RRV



The unit contains an integral hydraulic power pack for simple operation. Hydraulic rams and motors are fitted to aid in deploying and stowing bogies, clamping rail, lifting and traversing rail via the thimble clamp. There are auxiliary hydraulic connections fitted in the case of integral power pack failure. Only a similar-rated power pack should be used.

Work lights and illumination lights are fitted and powered by the RRV to aid poor light conditions.

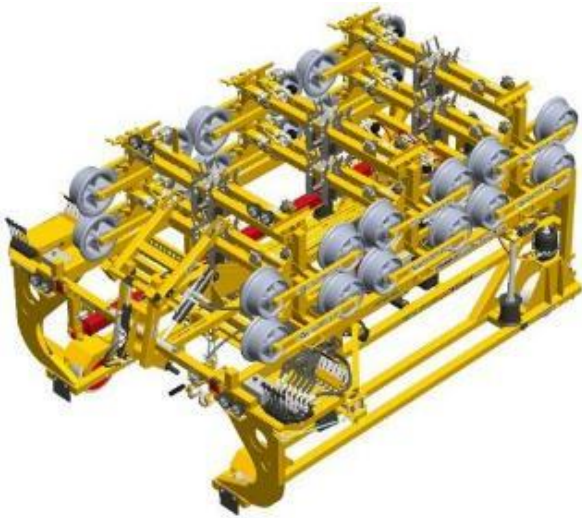
Each LRT is equipped with a fail-safe air braking system when used in conjunction with an appropriate towing / propelling vehicle. The connecting pneumatic hoses on the LRT have quick release "C" couplings for connecting to the towing / propelling RRV.

The fail-safe brake system(s) causes the brakes to be applied when one of the following occurs:

- The LRT or any of its bogies brakes away from the consist and causes the air hose to rupture.
- A break in the break-away warning circuit between LRT, trolleys and RRV.
- Operation of the handbrake at the driving position on the RRV.
- Full application of the footbrake on the RRV.
- Turning the brake system to the 'Off' position on the RRV.

TECHNICAL SPECIFICATION

	LRT main trailer	Standard LRT bogie	End LRT bogie with Integral lights
Width	2625 mm	1720 mm	1720 mm
Length	3500 mm	930 mm	930 mm
Mass	1835 mm	630 mm	630 mm
Total Mass	1035 kg	94 kg	95 kg
Centre of mass	Use dedicated lift points provided	Central – designed to be lifted by the LRT main unit only	Central – designed to be lifted by the LRT main unit only



LRT complete with bogies and tow bar



LRT 1st trailer



LRT 2nd trailer (Bogie)



LRT 3rd trailer (Bogie)

- Mass of LRT and tow bar without bogies 1,035kg
- Mass of LRT with 5 standard bogies + 1 end bogie + tow bar 1,600kg
- Maximum length of rail when used with Iveco RRV 108m (354')
- Maximum gross train mass (108m/354' @ 60kg/m rail) 1 8,080kg
- Height of LRT with all bogies stored 1915mm
- 1st Trailer (Main Trailer) SWL 1250kg
- 2nd and 3rd Trailer (Bogies) SWL 1100kg

Note: The RRV maximum permitted towing capacity is stated on each vehicle and it's appropriate Engineering Acceptance. Some vehicles may need to be updated to ensure full compatibility with the LRT.