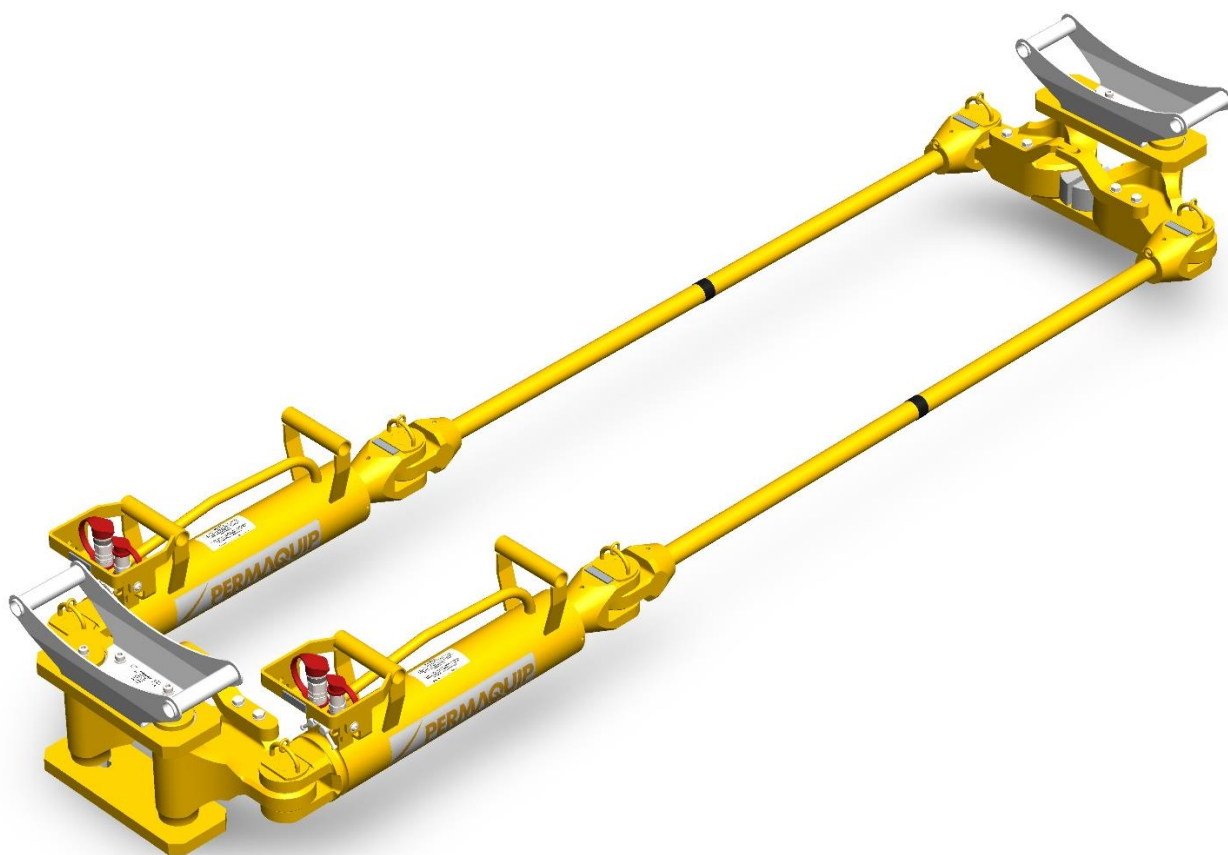


TECHNICAL
SPECIFICATION



PERMAQUIP

***NEW* STRESSOR**



Permaquip Ltd

Old Sleningford Farm,
North Stanley,
Ripon,
North Yorkshire, HG4 3JB

Tel: +44 (0) 1623 513349

E-mail: sales@permaquip.co.uk
www.permaquip.co.uk



MADE IN BRITAIN

Description:

The *New Permaquip™* Stressor is designed to be in sets or half sets to adjust the gap between rail ends for rail stressing, rail welding, repairing rail failures, and for installing insulated joints.

Based on the Permaquip HSM70 Stressor which is the most proven and durable Stressor on the market, the *New Stressor* has utilised the majority of the design but has been improved to aid ergonomic handling. The non-slip type clamps enable the gap to be maintained accurately in order to facilitate a stress-free weld. New handles have been fitted to prevent slipping and provide dedicated hand positions for the cylinder and clamps. The handles can also be utilised in conjunction with the Stressor Lifting / Carrying Tongs for a safer offset operation.

Numerous accessories such as lifting / carrying tongs, side rollers and under rail rollers are available.

The Permaquip™ Stressor is designed to be used in conjunction with the Permaquip Stressor Power Pack available in both Petrol & Electric options.

The Stressor is powder-coated yellow for high visibility when on track.

Please note:

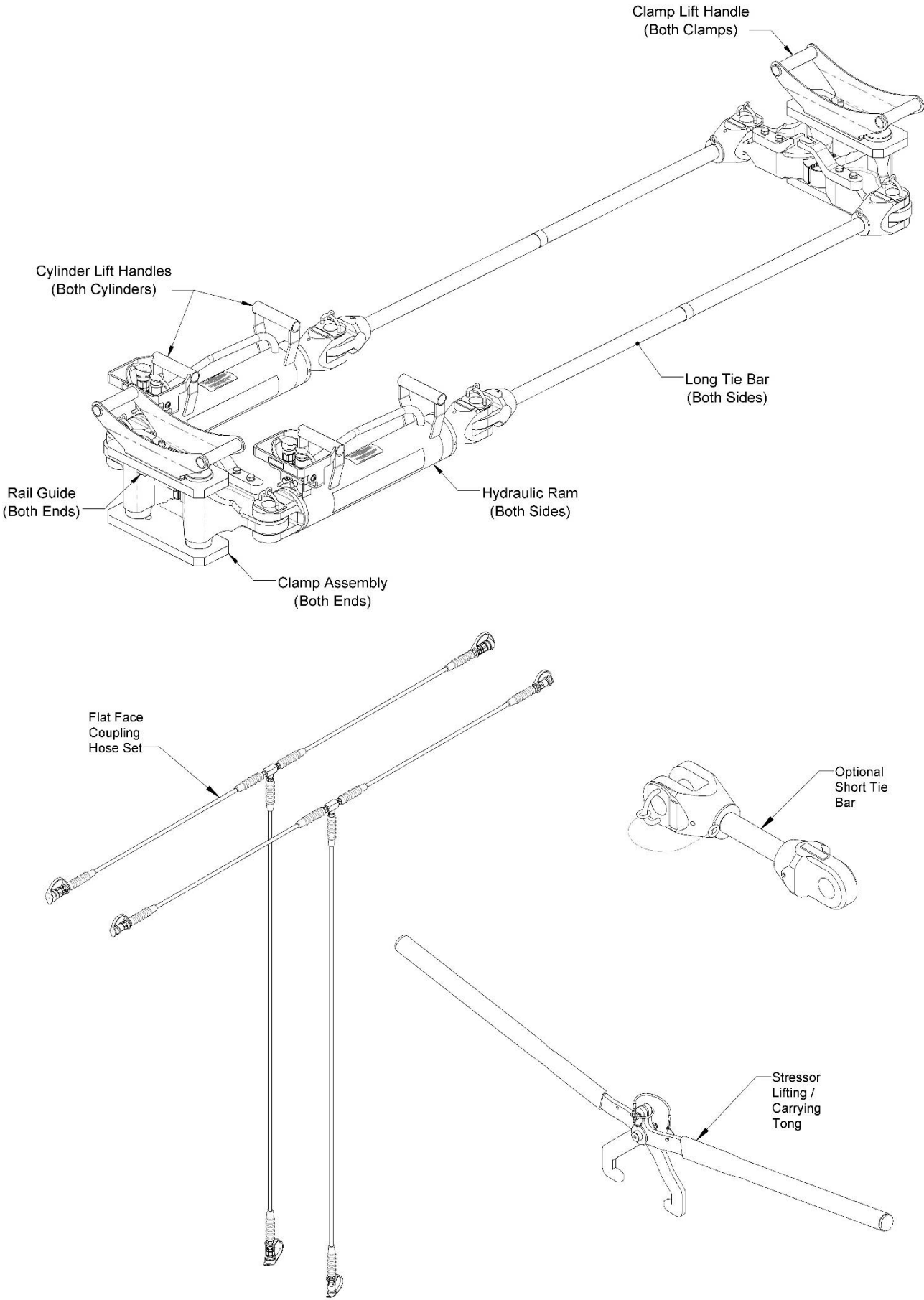
All information, illustrations and specifications in this Technical Sheet are based on the latest information available at the time of publication. The right is reserved to make changes at any time without notice.

Equipment operators and installers shall be responsible for ensuring that a safe working environment and safe systems of work are in place and in certain circumstances advice and permission from the controlling authority must be sought before any operation, installation or surveying work is carried out.

Permaquip™ is a trademark of Permaquip Ltd.

©2006 Permaquip Ltd.

New Stressor Layout:



Technical Data:

Stressor Part Numbers:

- Stressor Half Set UIC60 G/A 38849
- Stressor (Petrol) Power Pack FFC 33282
- Stressor Electric Power Pack FFC 38848
- Hose Assembly FFC 33281
- 5' Tie Bar Assembly (Standard) 38850
- 10' Long Tie Bar (Optional) 38863
- Short Tie Bar Assembly (Optional) 38838
- Stressor Lifting/Carrying Tongs 38854

Overall dimensions:

- Length (5' Long Tie Bar) 2631 to 3012mm
- Width 713mm
- Height 367mm

Operating Pressures & Performance:

- Closed Flow 8,500 p.s.i. (58.7 MNm⁻²)
- Open Flow 2,800 p.s.i. (19.4 MNm⁻²)
- Max Pulling Force 78 tonnes (39 tonne each Ram Assembly)
- Max Pushing Force 32 tonnes (15 tonne each Ram Assembly)
- Max Ram Stroke 381mm

Compatible Rail Sections:

- BS90A, 95A, 100A, 113A
- UIC50, 54 & 60
- IRS 75R & 90R
- 95 RBH
- S49
- AS41, AS47

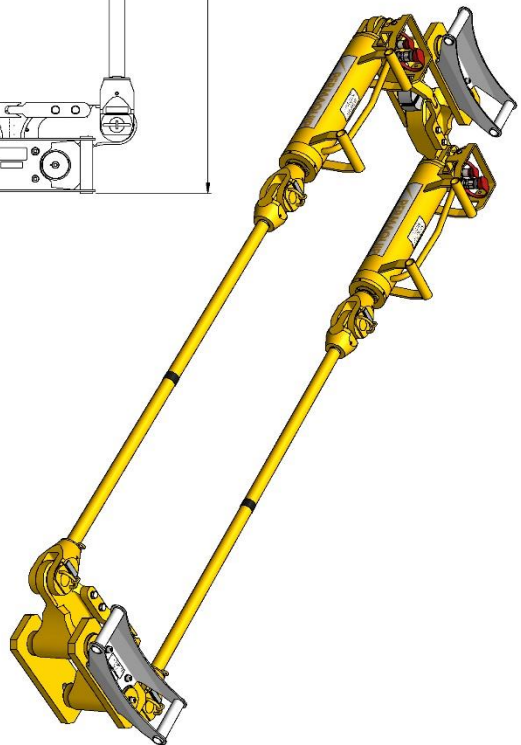
Note that the appropriate rail guide will need to be fitted.

Please contact Permaquip Ltd if the stressor is required to be used with other rail sections

Product Compliance:

- Directive 2006/42/EC
Safety of Machinery.
- Directive 93/68/EEC
CE Marking.

New Permaquip Stressor



2631 to 3012
(381 Stroke)

